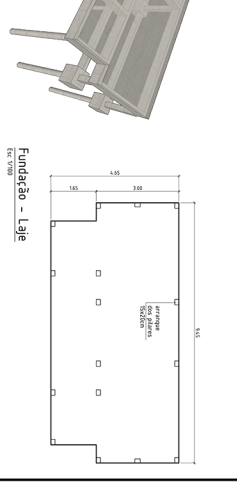
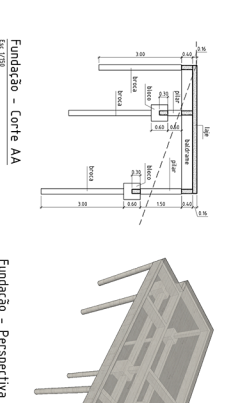
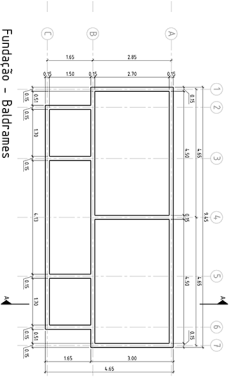
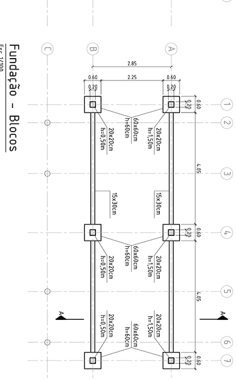
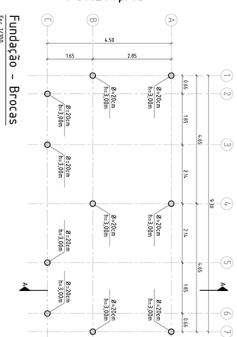
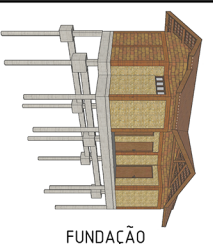
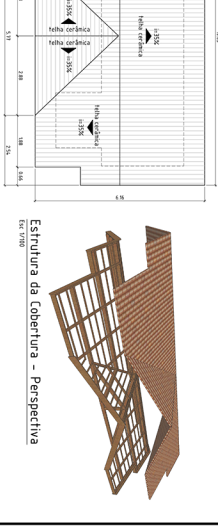
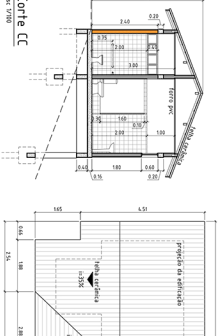
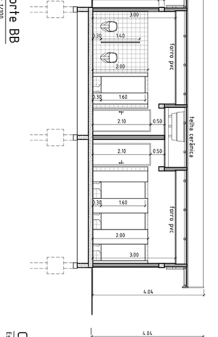
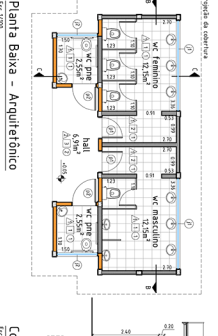
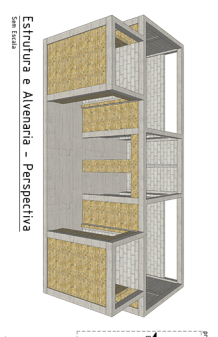
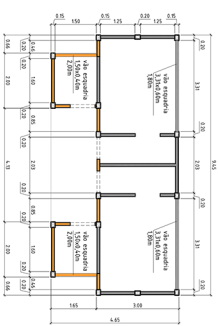


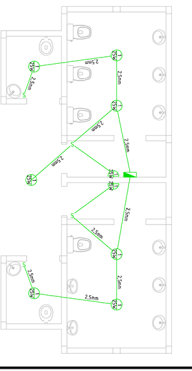
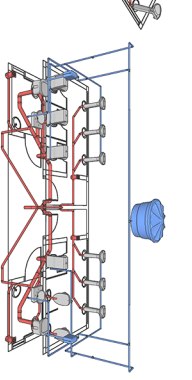
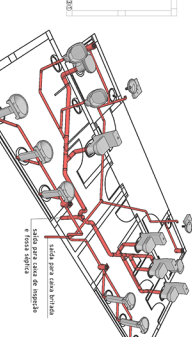
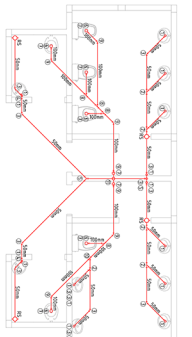
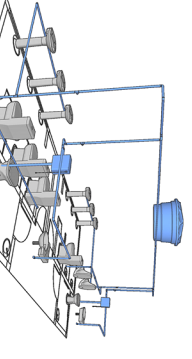
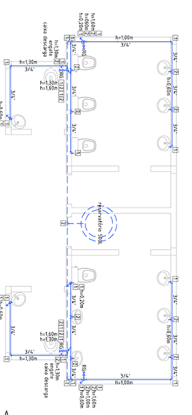
## ① SANITARIOS



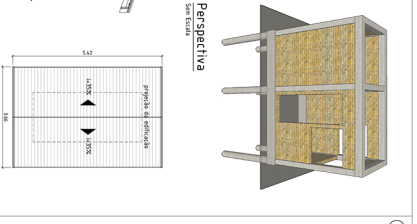
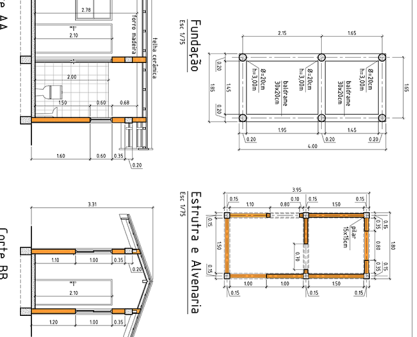
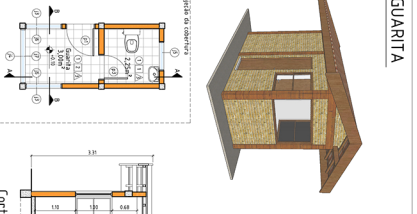
## ESTRUTURA E ALVENARIA



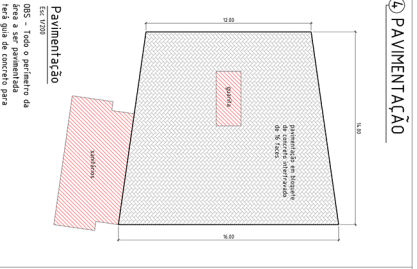
IDRÁULICA E ELÉTRICA



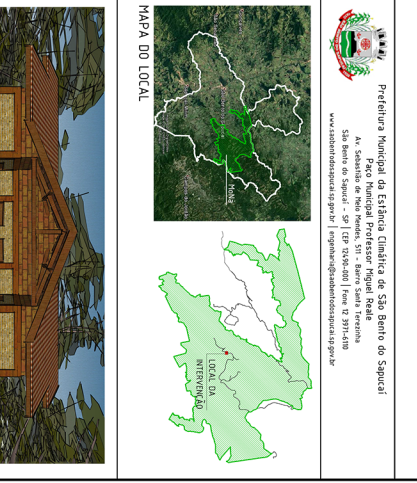
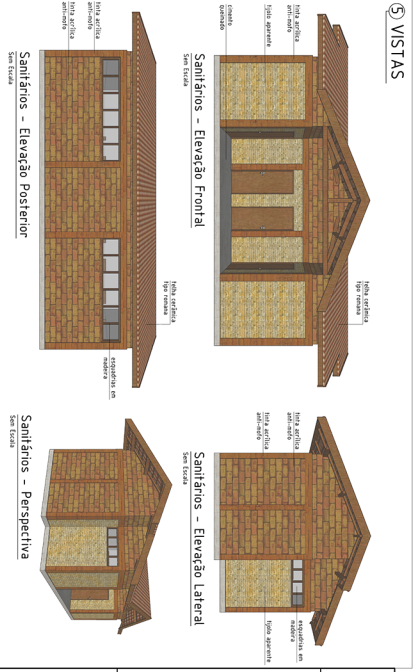
② GUARITA



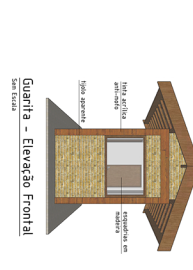
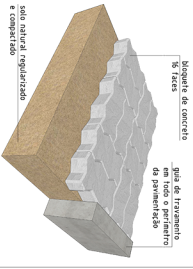
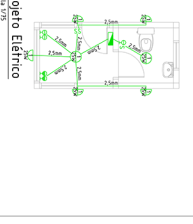
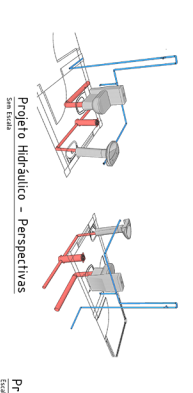
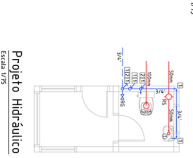
#### ④ PAVIMENTAÇÃO











































































































































⑤ VISTAS



## Planta - Arquitetônico



### ③ LEGENDAS

LEGENDAS										
Especificações					Acabamento		Hidráulica		Elétrica	
	largura	altura	perfil	tipo		esgoto				
	g1	2,10	---	plano	○	RSQ	até 50cm		aterrado	quantidade _____ 4,17mm²
	g2	0,90	2,10	---	cimento desmontado e alisado (quadrado)	7	até 50cm		enterrado	
	p1	0,10	2,10	---	madeira de abacaxi	2	até 50cm		embaixo do piso	quantidade _____ 24,37mm²
	p2	0,10	2,10	---	madeira de abacaxi	3	até 50cm		embaixo do piso	
	j1	0,40	2,10	---	madeira tipo manauá	1	até 50cm		interceptor simples	quantidade _____ 24,37mm²
	j2	0,40	2,10	---	madeira tipo manauá	2	até 50cm		interceptor simples	
	j3	1,00	1,10	---	madeira tipo pinho/ita	3	até 50cm		interceptor simples	quantidade _____ 24,37mm²
	j4	1,00	1,10	---	madeira tipo pinho/ita	4	até 50cm		interceptor simples	
	s1	0,80	0,60	---	madeira tipo manauá	5	até 50cm		interceptor simples	quantidade _____ 24,37mm²
	s2	0,80	0,60	---	madeira tipo manauá	6	até 50cm		interceptor simples	
	t1	1,00	1,10	---	madeira tipo manauá	7	até 50cm		interceptor simples	quantidade _____ 24,37mm²
	t2	1,00	1,10	---	madeira tipo manauá	8	até 50cm		interceptor simples	
	b1	1,00	1,10	---	madeira tipo manauá	9	até 50cm		interceptor simples	quantidade _____ 24,37mm²
	b2	1,00	1,10	---	madeira tipo manauá	10	até 50cm		interceptor simples	
	st1	1,00	1,10	---	madeira tipo manauá	11	até 50cm		interceptor simples	quantidade _____ 24,37mm²
	st2	1,00	1,10	---	madeira tipo manauá	12	até 50cm		interceptor simples	
	m1	1,00	1,10	---	madeira tipo manauá	13	até 50cm		interceptor simples	quantidade _____ 24,37mm²
	m2	1,00	1,10	---	madeira tipo manauá	14	até 50cm		interceptor simples	
	tl1	1,00	1,10	---	madeira tipo manauá	15	até 50cm		interceptor simples	quantidade _____ 24,37mm²
	tl2	1,00	1,10	---	madeira tipo manauá	16	até 50cm		interceptor simples	
	br1	1,00	1,10	---	madeira tipo manauá	17	até 50cm		interceptor simples	quantidade _____ 24,37mm²
	br2	1,00	1,10	---	madeira tipo manauá	18	até 50cm		interceptor simples	
	st3	1,00	1,10	---	madeira tipo manauá	19	até 50cm		interceptor simples	quantidade _____ 24,37mm²
	st4	1,00	1,10	---	madeira tipo manauá	20	até 50cm		interceptor simples	
	m3	1,00	1,10	---	madeira tipo manauá	21	até 50cm		interceptor simples	quantidade _____ 24,37mm²
	m4	1,00	1,10	---	madeira tipo manauá	22	até 50cm		interceptor simples	
	tl3	1,00	1,10	---	madeira tipo manauá	23	até 50cm		interceptor simples	quantidade _____ 24,37mm²
	tl4	1,00	1,10	---	madeira tipo manauá	24	até 50cm		interceptor simples	
	br3	1,00	1,10	---	madeira tipo manauá	25	até 50cm		interceptor simples	quantidade _____ 24,37mm²
	br4	1,00	1,10	---	madeira tipo manauá	26	até 50cm		interceptor simples	
	st5	1,00	1,10	---	madeira tipo manauá	27	até 50cm		interceptor simples	quantidade _____ 24,37mm²
	st6	1,00	1,10	---	madeira tipo manauá	28	até 50cm		interceptor simples	
	m5	1,00	1,10	---	madeira tipo manauá	29	até 50cm		interceptor simples	quantidade _____ 24,37mm²
	m6	1,00	1,10	---	madeira tipo manauá	30	até 50cm		interceptor simples	
	tl5	1,00	1,10	---	madeira tipo manauá	31	até 50cm		interceptor simples	quantidade _____ 24,37mm²
	tl6	1,00	1,10	---	madeira tipo manauá	32	até 50cm		interceptor simples	
	br5	1,00	1,10	---	madeira tipo manauá	33	até 50cm		interceptor simples	quantidade _____ 24,37mm²
	br6	1,00	1,10	---	madeira tipo manauá	34	até 50cm		interceptor simples	
	st7	1,00	1,10	---	madeira tipo manauá	35	até 50cm		interceptor simples	quantidade _____ 24,37mm²
	st8	1,00	1,10	---	madeira tipo manauá	36	até 50cm		interceptor simples	
	m7	1,00	1,10	---	madeira tipo manauá	37	até 50cm		interceptor simples	quantidade _____ 24,37mm²
	m8	1,00	1,10	---	madeira tipo manauá	38	até 50cm		interceptor simples	
	tl7	1,00	1,10	---	madeira tipo manauá	39	até 50cm		interceptor simples	quantidade _____ 24,37mm²
	tl8	1,00	1,10	---	madeira tipo manauá	40	até 50cm		interceptor simples	
	br7	1,00	1,10	---	madeira tipo manauá	41	até 50cm		interceptor simples	quantidade _____ 24,37mm²
	br8	1,00	1,10	---	madeira tipo manauá	42	até 50cm		interceptor simples	
	st9	1,00	1,10	---	madeira tipo manauá	43	até 50cm		interceptor simples	quantidade _____ 24,37mm²
	st10	1,00	1,10	---	madeira tipo manauá	44	até 50cm		interceptor simples	
	m9	1,00	1,10	---	madeira tipo manauá	45	até 50cm		interceptor simples	quantidade _____ 24,37mm²
	m10	1,00	1,10	---	madeira tipo manauá	46	até 50cm		interceptor simples	
	tl9	1,00	1,10	---	madeira tipo manauá	47	até 50cm		interceptor simples	quantidade _____ 24,37mm²
	tl10	1,00	1,10	---	madeira tipo manauá	48	até 50cm		interceptor simples	
	br9	1,00	1,10	---	madeira tipo manauá	49	até 50cm		interceptor simples	quantidade _____ 24,37mm²
	br10	1,00	1,10	---	madeira tipo manauá	50	até 50cm		interceptor simples	
	st11	1,00	1,10	---	madeira tipo manauá	51	até 50cm		interceptor simples	quantidade _____ 24,37mm²
	st12	1,00	1,10	---	madeira tipo manauá	52	até 50cm		interceptor simples	
	m11	1,00	1,10	---	madeira tipo manauá	53	até 50cm		interceptor simples	quantidade _____ 24,37mm²
	m12	1,00	1,10	---	madeira tipo manauá	54	até 50cm		interceptor simples	
	tl11	1,00	1,10	---	madeira tipo manauá	55	até 50cm		interceptor simples	quantidade _____ 24,37mm²
	tl12	1,00	1,10	---	madeira tipo manauá	56	até 50cm		interceptor simples	
	br11	1,00	1,10	---	madeira tipo manauá	57	até 50cm		interceptor simples	quantidade _____ 24,37mm²
	br12	1,00	1,10	---	madeira tipo manauá	58	até 50cm		interceptor simples	
	st13	1,00	1,10	---	madeira tipo manauá	59	até 50cm		interceptor simples	quantidade _____ 24,37mm²
	st14	1,00	1,10	---	madeira tipo manauá	60	até 50cm		interceptor simples	
	m13	1,00	1,10	---	madeira tipo manauá	61	até 50cm		interceptor simples	quantidade _____ 24,37mm²
	m14	1,00	1,10	---	madeira tipo manauá	62	até 50cm		interceptor simples	
	tl13	1,00	1,10	---	madeira tipo manauá	63	até 50cm		interceptor simples	quantidade _____ 24,37mm²
	tl14	1,00	1,10	---	madeira tipo manauá	64	até 50cm		interceptor simples	
	br13	1,00	1,10	---	madeira tipo manauá	65	até 50cm		interceptor simples	quantidade _____ 24,37mm²
	br14	1,00	1,10	---	madeira tipo manauá	66	até 50cm		interceptor simples	
	st15	1,00	1,10	---	madeira tipo manauá	67	até 50cm		interceptor simples	quantidade _____ 24,37mm²
	st16	1,00	1,10	---	madeira tipo manauá	68	até 50cm		interceptor simples	
	m15	1,00	1,10	---	madeira tipo manauá	69	até 50cm		interceptor simples	quantidade _____ 24,37mm²
	m16	1,00	1,10	---	madeira tipo manauá	70	até 50cm		interceptor simples	
	tl15	1,00	1,10	---	madeira tipo manauá	71	até 50cm		interceptor simples	quantidade _____ 24,37mm²
	tl16	1,00	1,10	---	madeira tipo manauá	72	até 50cm		interceptor simples	
	br15	1,00	1,10	---	madeira tipo manauá	73	até 50cm		interceptor simples	quantidade _____ 24,37mm²
	br16	1,00	1,10	---	madeira tipo manauá	74	até 50cm		interceptor simples	
	st17	1,00	1,10	---	madeira tipo manauá	75	até 50cm		interceptor simples	quantidade _____ 24,37mm²
	st18	1,00	1,10	---	madeira tipo manauá	76	até 50cm		interceptor simples	
	m17	1,00	1,10	---	madeira tipo manauá	77	até 50cm		interceptor simples	quantidade _____ 24,37mm²
	m18	1,00	1,10	---	madeira tipo manauá	78	até 50cm		interceptor simples	
	tl17	1,00	1,10	---	madeira tipo manauá	79	até 50cm		interceptor simples	quantidade _____ 24,37mm²
	tl18	1,00	1,10	---	madeira tipo manauá	80	até 50cm		interceptor simples	
	br17	1,00	1,10	---	madeira tipo manauá	81	até 50cm		interceptor simples	quantidade _____ 24,37mm²
	br18	1,00	1,10	---	madeira tipo manauá	82	até 50cm		interceptor simples	
	st19	1,00	1,10	---	madeira tipo manauá	83	até 50cm		interceptor simples	quantidade _____ 24,37mm²
	st20	1,00	1,10	---	madeira tipo manauá	84	até 50cm		interceptor simples	
	m19	1,00	1,10	---	madeira tipo manauá	85	até 50cm		interceptor simples	quantidade _____ 24,37mm²
	m20	1,00	1,10	---	madeira tipo manauá	86	até 50cm		interceptor simples	
	tl19	1,00	1,10	---	madeira tipo manauá	87	até 50cm		interceptor simples	quantidade _____ 24,37mm²
	tl20	1,00	1,10	---	madeira tipo manauá	88	até 50cm		interceptor simples	
	br19	1,00	1,10	---	madeira tipo manauá	89	até 50cm		interceptor simples	quantidade _____ 24,37mm²
	br20	1,00	1,10	---	madeira tipo manauá	90	até 50cm		interceptor simples	
	st21	1,00	1,10	---	madeira tipo manauá	91	até 50cm		interceptor simples	quantidade _____ 24,37mm²
	st22	1,00	1,10	---	madeira tipo manauá	92	até 50cm		interceptor simples	
	m21	1,00	1,10	---	madeira tipo manauá	93	até 50cm			